



August 2023

Dear Township Supervisors,

Hoffman Homes for Youth is a non-profit organization providing inpatient and outpatient behavioral health treatment, educational services, and county-oriented residential programs to youth, young adults, and their families from across the commonwealth. We inspire hope and brighter futures, helping to strengthen communities, including Heidelberg Township.

As a resource for your residents and social services agency, Hoffman Homes for Youth relies on annual grants and contributions from donors. Please consider supporting us this year with a contribution from your ARPA (American Rescue Plan Act of 2021) funds allocation. Your investment will have a significant and positive impact on the mental health of youth and young adults in your community.

Enclosed is a brief overview of our organization. Hoffman Homes, Inc. is a 501(c)(3) charitable organization (EIN 23-2732296). If you have questions or would like to learn more, please get in touch with us. We would be honored to meet with you. Your generosity will change lives.

In gratitude,

Rebecca Van der Groef, LSW
CEO

717-359-7148, x2700

rvandergroef@hoffmanhomes.com

Youth and young adults from across Pennsylvania were more likely to experience anxiety and depression during the first year of the COVID-19 pandemic than previously, jumping from 10.2% (226,000) to 13% (282,000) of individuals ages 3-17. – *The Annie E. Casey Foundation*



New Programs

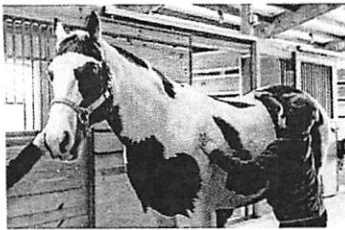
In 2022, we launched three new programs. Transitional Living helps females, ages 16-21, develop life, social, and job skills to thrive independently.



A 15-bed emergency Shelter offers youth, ages 7-21, in custody of Children & Youth, temporary placement while waiting for a permanent situation.

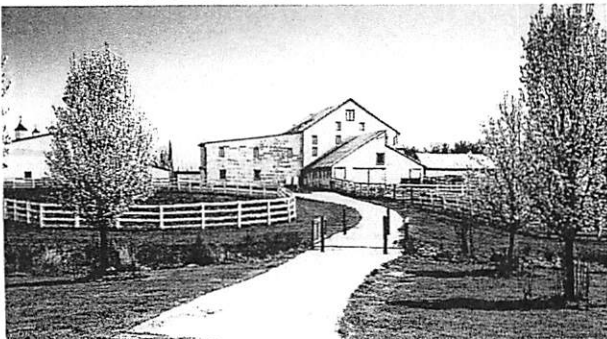
Our Psychiatric Outpatient Clinic provides individual, group, and family therapy to our Shelter and Transitional Living programs. Our goal is to expand this service to community members of all ages.

A key part of care at Hoffman Homes for Youth is our Creative Therapies. Types include Equine-Assisted, Animal-Assisted, and Art Therapies.



Get Involved

- ✓ Donate financial or in-kind support. Visit www.hoffmanhomes.com.
- ✓ Come for a tour. Contact Susan at 717-359-7148, x4500 to schedule.
- ✓ Donate clothing and household items to **CommunityAid**. Give them our Partner #50059 and we receive credit!



Providing services that inspire hope and brighter futures to youth, young adults and their families!

Psychiatric Residential Treatment

✦
Hoffman Academy

✦
Transitional Living

✦
Emergency Shelter

✦
Outpatient Psychiatric Clinic

Hoffman Homes, Inc. is a 501(c)(3) charitable organization, EIN 23-2732296.
815 Orphange Road, Littlestown, PA 17340
www.hoffmanhomes.com 717-359-7148

Hoffman Homes for Youth provides inpatient and outpatient behavioral health treatment, educational services, and county-oriented residential programs to youth, young adults, and their families from across Pennsylvania.

86 Youth, young adults admitted last year to residential treatment.

13 Average age at admission.

10 Average length of stay.
months

Prior to admission,

95% had a stay at a psychiatric hospital

65% had attempted suicide at least once

36% suffered physical abuse

